



October 2024 Agricultural Plastics Pilot Program Report Grant Agreement: ESB-047715

Reporting period: April 1 to September 30, 2024 |



The pilot project is led by the multi-stakeholder Agricultural Plastics Recycling Group; funds were granted by the Government of Alberta and are administered by Alberta Beef Producers.

Table of Contents

- 1. Introduction 3
 - 1.1 Program Key Highlights – April 1 to September 30, 2024 3
 - 1.2 Communications & Twine Collection Micro-Pilot..... 4
- 2 Agricultural Plastics Recycling Group (APRG)..... 5
 - 2.2 APRG Executive Activities..... 5
- 3 Pilot 5
 - 3.2 Overall Pilot Quantities Collected 6
 - 3.3 Next Steps 6
- 4 Cleanfarms Presentations and Discussions..... 6
- 5 Budget Details April 1 to September 30, 2024 7

Appendices

- [Appendix A – Collection Partners and Location \(Maps\)](#) 8
- [Appendix B – APRG Member Organizations](#) 11
- [Appendix C – Quantities of Grain Bags and Twine Sent for Recycling](#) 12
- [Appendix D – Agricultural Plastics Recycling Group Quarterly Report – Q2 2024](#) 13
- [Appendix E - Agricultural Plastics Recycling Group Quarterly Report – Q2 2024](#) 24

1. Introduction

The Alberta Ag-Plastic. *Recycle It!* program, a government-funded pilot project, has been a resounding success in helping Alberta farmers recycle used grain bags and baler twine since its inception in 2019. This program, which has been extended through December 31, 2025, not only diverts these materials from landfills but also delivers research projects to pave the way for a long-term, sustainable, self-funded program.

This report summarizes the critical pilot activities from April 1, 2024, through September 30, 2024.

The Alberta Ag-Plastic. *Recycle It!* program is an excellent example of collaboration in Agriculture, led by the multi-stakeholder Agricultural Plastics Recycling Group (APRG). This group, comprising over 20 stakeholder organizations from various sectors across Alberta, including municipalities, producers, non-profits, recyclers, retailers, and others, provides invaluable oversight and a network for disseminating information and building support.

The Alberta Ag-Plastic. *Recycle It!* program is financially supported through a grant from the Government of Alberta, including funding through the Sustainable Canadian Agricultural Partnership. The funds are administered by Alberta Beef Producers, ensuring transparent and responsible financial management of the program.

Cleanfarms, a national non-profit industry stewardship organization, is the program operator responsible for identifying and accessing end markets, handling program logistics, including collecting, transporting, and recycling materials, and leading research projects. Cleanfarms is the only industry-funded organization across Canada that develops and operates waste product and packaging stewardship for the agricultural community. It operates six permanent programs across 10 provinces spanning over 10 million square kilometres and 190,000 farms. Cleanfarms does this by offering collection services in partnership with over 1,500 retail and municipal collection sites.

Grain bags and twine have been collected for 60 consecutive months via this pilot program (collection started in October 2019), and sufficient data exists to inform the next steps for a permanent program.

1.1 Program Key Highlights – April 1 to September 30, 2024

The program has seen a steady influx of used grain bags and baler twine yearly. There is now a predictable ebb and flow of material arriving at collection sites throughout the year, indicative of a maturing and stable collection program.

Collection rates for grain were consistent with the average tonnage collected since the program inception. Based on anecdotal accounts and harvest reports, it is anticipated that grain bag collections will continue to increase throughout the next quarter. The MD Pincher Creek joined as a collection partner in June of 2024 (Table 1), adding one new grain bag and twine collection site. There is still a strong appetite throughout the province from new municipalities to join the pilot program to manage and recycle these products. Cleanfarms continues to work with potential new partners which would fill additional geographic gaps in the province. A detailed map of all current collection locations (not including the high-volume twine users) can be found [online](#).

To increase program awareness, work is underway to launch a fall twine collection contest. 'The Great Twine Round-Up' is set to launch on October 24, 2024, known as Plastics Day, during the globally recognized Waste Reduction Week. As of this report, a campaign/branding document has been finalized, while all relevant social and digital outreach and advertising assets are near completion. The contest will run from November 1, 2024, through May 31, 2025.

Table 1 – Alberta Pilot April to October 2024:

Material type	Tonnes collected		
	Total	Legacy material ¹	Pilot material
Grain bags	394	-	394
Twine	66	-	66
Total tonnage collected ²	460	-	460

¹'Legacy material' is defined as grain bags and/or twine that were collected and stored onsite by the collection sites prior to becoming a pilot collection site.

²The total tonnage excludes disposal waste contained in legacy material.

See Appendix A for a list of collection partners and a map of their locations in Alberta.

Collection site summary

Total number of collection sites	160
Sites collecting grain bags only	1
Sites collecting twine only	113
Sites collecting grain bags and twine	46

Total collection partners: 50 partners with 160 collection locations for either grain bags or twine or both.

1.2 Communications & Twine Collection Micro-Pilot

In the second quarter of 2022, Alberta Agriculture and Irrigation encouraged the implementation of an integrated communication program deployed through late spring, late summer and fall of 2022 to build awareness among farmers/producers about the 'Alberta Ag Plastic. *Recycle it!*' program. The goal is to gather enough data and spread awareness to transition the program from a pilot to a permanent program at a later date. As a result, Cleanfarms developed an extensive communications plan and a twine micro-pilot work plan to be operated within the 'Alberta Ag Plastic. *Recycle it!*' program.

Communication activities since the last report include:

- April: advertising (Appendix C)
 - [Alberta Beef Magazine](#) (Print/Digital)
- May: advertising (Appendix C)
 - [Alberta Beef Magazine](#) (Print/Digital)
 - May 2 Media Release: "[Alberta Ag Plastic. Recycle It! Program Extended Until December 2025!](#)" | [Alberta Ag Plastic. Recycle It! Le programme est prolongé jusqu'en décembre 2025 !](#)
 - May 7 CBC Calgary radio interview by Dave Gilson (not available online)
- June: advertising (Appendix C)
 - [Alberta Beef Magazine](#) (Print/Digital)
- June: Developed 4H twine contest rules

Paid advertising with a focus on twine recycling (Appendix C)

- July 2024 - [Alberta Beef Magazine](#) - Inside front cover
- August 2024 - [Alberta Beef Magazine](#) - Feedlot special – p 2/40
- September - [Alberta Beef Magazine](#) – p. 14/40

Paid advertising with a focus on twine and grain bag recycling (Appendix C)

- September 2024 – Alberta Beef Producers

Partner Content: Lethbridge County Newsletter

- Developed a 300-word article on 'The Great Twine Round-Up' contest for Lethbridge County fall Newsletter.
- The article was also distributed to all other program partners for use in their newsletters.

Twine recycling video

- Created a how-to recycle twine instructional [video](#) that is available on the '[Alberta Ag Plastic. Recycle-It!](#)' program details page of [cleanfarms.ca](#)
- A social media amplification post was developed for the video and will be launched at the end of October.
- The video was developed and paid for by Cleanfarms, separate from the 'Alberta Ag Plastic. Recycle It!' pilot and therefore does not include program branding as it is used across all prairie provinces.

2 Agricultural Plastics Recycling Group (APRG)

The multi-stakeholder APRG aims to meet in person/virtually to keep members informed on the pilot updates and allow for feedback and engagement from members on key topics. The APRG committee has a board meeting twice a year. An executive of five representatives is elected each year by the members and the executive meets monthly to interact with and oversee the program operator, advocate for a permanent program and report back to the group. All APRG members provide valuable input to the pilot from their unique perspectives and also play a key role in disseminating information back out to their members and partners.

The Committee mandate is to assist in the development of recommendations to manage ag plastics including:

- Promote ag plastics recycling actions and programs that are sustainable, and
- Implement the terms as set out in the Alberta ag plastics pilot program business plan.

A list of members of the APRG is included in Appendix B.

2.2 APRG Executive Activities

The executive met five times during this reporting period.

APRG activities and communication outreach included continued work and support for Cleanfarms' implementation of the pilot, outreach to stakeholder groups and teams to brief and bring groups up to speed on the pilot and next steps.

This group will be a key stakeholder when the Government conducts consultation about including ag plastics in provincial Extended Producer Responsibility (EPR) legislation.

3 Pilot

The background for how the pilot is intended to operate can be found in the *December 2020 Agricultural Plastics Pilot Program Report*.

Overall Pilot Quantities Collected

A total of 4,018 tonnes of material has been collected since the program's inception.

Table 2 – Alberta Pilot October 2019 through October 2024

Material Type	Tonnes Collected		
	Total	Legacy Material ¹	Pilot Material
Grain bags	3,498	544	2,954
Twine	520	38	482
Total tonnage collected ²	4018	582	3,436

¹'Legacy material' is defined as grain bags and/or twine that were collected and stored onsite by the collection sites prior to becoming a pilot collection site.

²The total tonnage excludes disposal waste contained in legacy material.

Legacy material was transported to end markets under the pilot program. 'Pilot material' is defined as grain bags and twine that have been collected after site agreements were executed. Please see Appendix C for a detailed breakdown of the quantity collected by the collection sites.

As of this report, two of the original twenty collection partners have yet to collect enough grain bags to constitute a full truckload for recycling; one of the sites has a partial load, while the other (MacKenzie Regional Waste Landfill) is in a transition phase with site management.

Limited locations for twine drop off is a perceived barrier amongst farmers. With the Twine micro-pilot underway, work continues to fill geographic collection gaps for twine-only collection.

3.2 Next Steps

- Cleanfarms will work with collection sites to monitor the quantities stockpiled for efficient collection and consider additional sites for twine collection.
- Cleanfarms will implement the micro-pilot communications and collection plan.
- A top priority for the APRG includes communication outreach to stakeholder groups about the program.
- Continued engagement with individual farmers and commodity groups is planned in 2024 at events as well as to pursue more media coverage about the pilot program through commodity group news and magazine publications.
- Running the twine collection contest in the Winter of 2024/25 with 4H clubs.

4 Cleanfarms Presentations and Discussions

Collection Site Communications

- In-person events:
 - August 13 – site tour of Vulcan County collection sites
- Remote Events/Webinars
 - April 24 – Birch Hills ASB program education presentation.
 - June 17 – Roseridge waste program overview presentation.
 - July 3 – Lac La Biche ASB program education presentation.
 - September 11-13 – AB CARE Fall Conference Bonnyville, tradeshow booth.
 - September 12 – Red Deer ASB program education presentation.

5 Budget Details April 1 to September 30, 2024

Balance spent in Q2 and Q3 2024 \$ (44,270)
 Balance as of September 30, 2024 \$ (663,652)

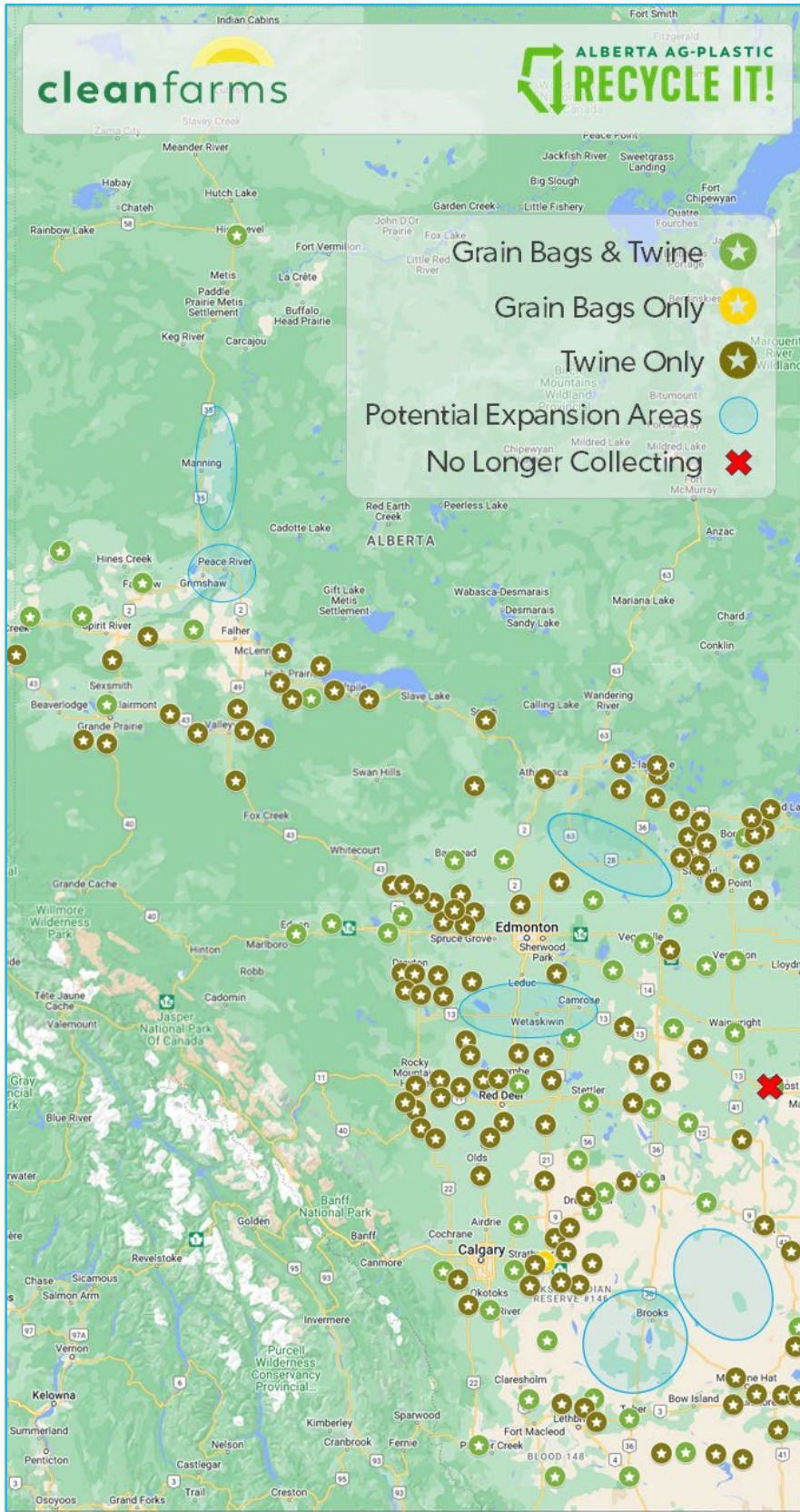
Revenue	Apr-Sept
<i>Funds Transferred to Cleanfarms from Alberta Beef Producers</i>	
<i>Studies</i>	-
<i>Communications</i>	\$ 7,251
<i>Net Collection Costs</i>	\$ 57,029
<i>Program Admin (Cleanfarms)</i>	\$ 35,000
Total Revenue from Alberta Beef Producers	\$ 99,280
<i>Recycling Revenue</i>	
<i>Revenue from Marketing Materials</i>	\$ 39,715
Total Program Revenue	\$ 138,995
Expenses	
<i>Studies</i>	
Ag Waste Characterization Study	-
Stakeholder Groups Survey	-
Market Analysis	-
<i>Communications</i>	
Brand Development	\$ 3,371
Printing Costs	\$ 3,880
Design Costs	-
<i>Collection Costs</i>	
Contractor Expenses	\$ 59,534
Collection Bags	\$ 12,275
Incentive Payments	\$ 24,935
Total Collection Costs	\$ 96,744
<i>Program Admin (Cleanfarms)</i>	\$ 35,000
Total Cleanfarms and Operational Expenses	\$ 138,995
<i>Committee</i>	
Secretariat - APRA	-
Technical Oversight - RCA	-
<i>ABP Accounting/Grant administrator</i>	-
Total Committee and Administrator Expenses	-
Total Program Expenses	\$ 138,995

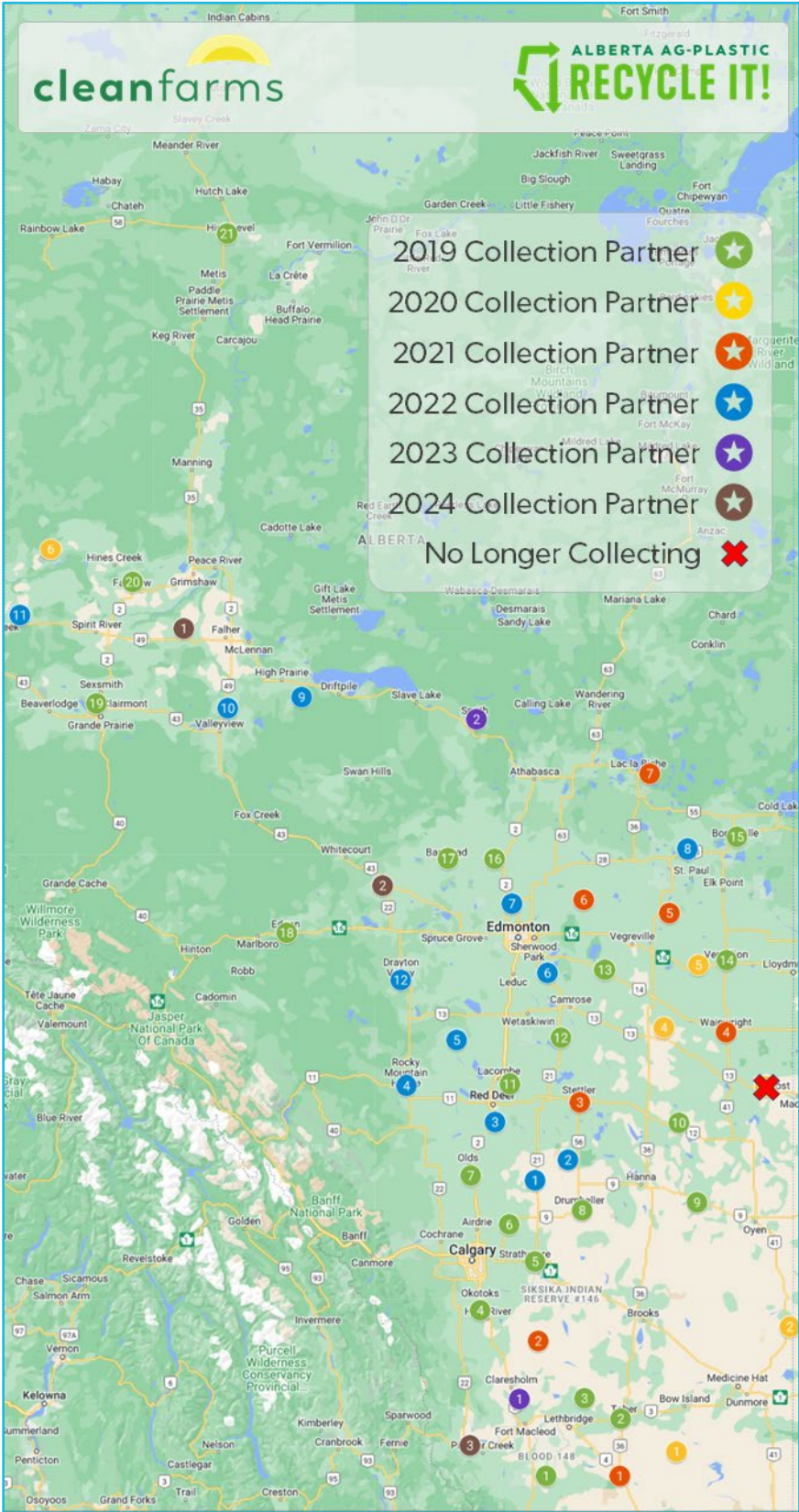
Project inception until September 30, 2024
 Expenses \$ (927,988)
 Grant Received – May 31, 2024 \$ 165,000
 Interest earned (since inception) \$ 84,444
 Balance \$ 663,652

Appendix A – Collection Partners and Location (Maps)

Collection Partner	Site Number	Year Joined Program
Cardston County	1	2019
MD of Taber	2	2019
Lethbridge County/DBS Environmental	3	2019
MD of Foothills/Foothills Regional Services Comm.	4	2019
Wheatland County	5	2019
Rocky View County	6	2019
Mountain View County (<i>twine only</i>)	7	2019
Drumheller & District Solid Waste Mgmt. Assoc.	8	2019
Special Areas 2,3,4/Big Country Waste Mgmt. Comm.	9	2019
County of Paintearth/Paintearth Regional Waste Mgmt.	10	2019
Lacombe County	11	2019
Camrose County	12	2019
Claystone Waste/Ryley Landfill	13	2019
County of Vermilion River	14	2019
MD of Bonnyville	15	2019
Westlock County/Westlock Regional Waste Mgmt. Comm.	16	2019
County of Barrhead	17	2019
Yellowhead County/Edson & District Recycling Society	18	2019
County of Grande Prairie	19	2019
MD of Fairview/North Peace Regional Landfill	20	2019
Mackenzie County/Mackenzie Regional Waste Mgmt. Comm.	21	2019
County of Forty Mile/South Forty Waste	1	2020
Cypress County	2	2020
MD of Provost	3	2020
Flagstaff County/Flagstaff Regional Solid Waste Mgmt.	4	2020
County of Minburn	5	2020
Clear Hills County	6	2020
County of Warner	1	2021
Vulcan County	2	2021
County of Stettler	3	2021
MD of Wainwright/Wainwright Regional Waste to Energy Authority	4	2021
County of Two Hills	5	2021
Lamont County/St. Michael Regional Solid Waste Commission	6	2021
Lac La Biche County (<i>twine only</i>)	7	2021
Kneehill County (<i>twine only</i>)	1	2022
Starland County	2	2022
Red Deer County	3	2022
Clearwater County (<i>twine only</i>)	4	2022
Ponoka County	5	2022
Leduc County (<i>twine only</i>)	6	2022
Sturgeon County (<i>twine only</i>)	7	2022
County of St. Paul (<i>twine only</i>)	8	2022
Big Lakes County	9	2022
MD of Greenview (<i>twine only</i>)	10	2022
Saddle Hills County	11	2022
Brazeau County (<i>twine only</i>)	12	2022
MD of Willow Creek	1	2023
MD of Lesser Slave River (<i>twine only</i>)	2	2023
Birch Hills County	1	2024
Lac Ste. Anne County (<i>twine only</i>)	2	2024
Crowsnest/Pincher Creek Regional Landfill	3	2024

Note: MD of Provost is no longer participating as a pilot collection partner.





Appendix B – APRG Member Organizations

Organization	Sector/Representation
Agricultural Service Board	Board Representation
AB Association of Agricultural Fieldmen	Agricultural Fieldmen
Agri-Novatex	Retailer
Alberta Agriculture and Irrigation	Government (ex officio)
Alberta Beef Producers	Livestock
Alberta Cattle Feeders Association	Livestock
Alberta CARE	Recycling and Waste Management
Alberta Environment & Protected Areas	Government (ex officio)
Alberta Federation of Agriculture	Producers
Alberta Grains	Barley, Wheat Producers
Alberta Milk Producers	Dairy Producers
Alberta Plastics Recycling Association	Plastics Recycling
Alberta Municipalities	Urban Municipalities
Berry BPI Agriculture	Material Manufacturer
Merlin Plastics	Recycler
Mountain View County	Municipality
Olds College	Academia
Peavey Mart	Retailer
Recycling Council of Alberta	Recycling and Resource Conservation
Revolution Plastics	Recycler
Rural Municipalities of Alberta (RMA)	Municipalities
South/Central Waste Collaboration Group	Rural Municipalities
TAMA Canada	Retailer
Team Alberta Crops	Crop Producers
The Jungle Farm	Crop Producer

APRG Executive include:

Assar Grinde, Alberta Beef Producers; Jennifer Koole, Recycling Council of Alberta; Kevin Wirsta, Rural Municipalities of Alberta; Dean Hubbard, Alberta Grains; Tammy Schwass, Alberta Plastics Recycling Association

Appendix C – Quantities of Grain Bags and Twine Sent for Recycling

Grain Bags and Twine Sent for Recycling Oct 2019 - Present					
Site Name	County	Legacy Material (kg)		Pilot Collection (kg)	
		Grain Bags	Twine	Grain Bags	Twine
Ryley Landfill	Beaver County	-	-	26,440	1,475
Youngstown Regional Landfill	Special Areas 2, 3 & 4	-	-	19,840	3,810
Cardston County Composting Yard	Cardston County	-	-	7,945	-
Clairmont Landfill	County of Grande Prairie	22,020	-	31,490	475
Vermilion Waste Transfer Station	County of Vermilion River	9,780	-	104,355	2,063
Iron Springs Transfer Site	Lethbridge County	-	-	135,276	20,393
Drumheller & District Regional Landfill	Drumheller	-	6,320	138,573	5,860
Foothills Regional Landfill & Resource Recovery Centre	M.D. of Foothills	-	-	113,125	3,500
Prentiss Landfill	Lacombe County	-	7,110	143,545	12,410
MacKenzie Regional Waste Landfill	Mackenzie No. 23	-	-	-	-
Mountain View County Ag Shop Twine Collection	Mountain View County	N/A	-	N/A	10,396
Municipal District of Bonnyville Public Works Shop	MD of Bonnyville	10,670	-	33,250	6,010
MD of Taber Operations and Maintenance Building	MD of Taber	-	-	118,360	13,125
County of Barrhead Public Works Shop	County of Barrhead	-	-	9,130	-
Westlock Regional Landfill	Westlock County	-	2,000	-	11,970
North Peace Regional Landfill	MD of Fairview	57,870	-	114,320	1,550
Coronation Transfer Station	County of Paintearth	-	-	52,570	3,982
Irricana Transfer Site	Rocky View County	64,139	7,800	250,330	22,304
West Dried Meat Lake Regional Landfill	Camrose County	49,250	1,250	126,410	922
Wheatland County Agriculture Service Board Shop	Wheatland County	-	-	351,153	3,249
Edson & District Recycling Society	Yellowhead County	37,860	-	29,480	-
Cleardale Transfer Station	Clear Hills County	-	-	28,900	-
Foremost Transfer Station - South Forty Waste	County of Forty Mile No. 8	-	-	50,100	240
Mannville Waste Transfer Station	County of Minburn	33,060	12,970	141,290	8,853
Hilda Transfer Station	Cypress County	11,520	-	4,810	2,134
Flagstaff Waste Regional Landfill	Flagstaff County	-	-	137,925	7,395
Provost Regional Landfill	MD of Provost	33,060	-	8,250	1,513
County of Warner Ag Service Board Shop	County of Warner	-	-	32,630	4,510
Vulcan Waste Transfer Station	Vulcan County	-	-	120,930	1,530
Beaver Lake Landfill	Lac La Biche County	N/A	493	N/A	-
Two Hills Regional Landfill	County of Two Hills	-	-	46,015	-
Wainwright Regional Landfill	MD of Wainwright	62,405	-	29,640	-
Stettler County Operations Shop	County of Stettler	-	-	10,557	620
Horn Hill Transfer Station	Red Deer County	N/A	-	N/A	1,819
St. Michael Regional Landfill	Lamont County	-	-	33,770	1,710
Three Hills Transfer Station	Kneehill County	N/A	-	N/A	1,874
New Sarepta/Sunnybrook Waste Transfer Station	Leduc County	N/A	-	N/A	1,092
New Fish Creek Transfer Station	MD of Greenview	N/A	-	N/A	-
Bluffton Landfill	Ponoka County	N/A	-	N/A	410
Blueberry/Bonanza Transfer Site	Saddle Hills County	134,270	-	91,120	-
Rumsey/Michichi Transfer Station	Starland County	-	-	35,945	175
Central Transfer Station	Clearwater County	N/A	-	N/A	9,472
Ashmont/Mallaig Transfer Station	County of St. Paul	N/A	-	N/A	820
Roseridge Landfill	Sturgeon County	N/A	-	N/A	-
Big Lakes County Regional Landfill	Big Lakes County	-	-	-	585
Brazeau County Shop	Brazeau County	N/A	-	N/A	880
Willow Creek Regional Landfill	MD of Willow Creek	-	-	23,950	3,480
Flatbush/Smith Transfer Station	MD of Lesser Slave River	N/A	-	N/A	-
Wanham/Tangent Transfer Stations	Birch Hills County	18,270	-	52,710	-
Mayerthorpe Transfer Station	Lac Ste. Anne County	-	-	-	3,880
Pincher Creek Landfill	MD of Pincher Creek	-	-	-	8,230
Athabasca Regional Landfill (often reported with Westlock)	Athabasca County	-	-	-	210
Grain Bag Recycler	AB Recyclers	N/A	N/A	N/A	2,590
Farm (non-pilot site)	AB Farms	-	-	300,230	1,100
Hay Processing Plants (non-pilot sites)	Southern Alberta	N/A	-	N/A	293,572
Totals		544,174	37,943	2,954,364	482,188
Total Grain Bags		3,498,538		Total Twine	520,131
		Total Grain Bags and Twine		4,018,669	

Disposal Waste Contained in 2019 Legacy Grain Bag Material

PolyAg Recycling Ltd.	(109,760)	-	-	-
Total Grain Bags Subtract Legacy Waste	3,388,778		Total Twine	520,131
Total Grain Bags and Twine Subtract Legacy Waste		3,908,909		

Note: County of Barrhead and Westlock County were previously reported as one collection location.

Appendix D – Agricultural Plastics Recycling Group Quarterly Report – Q2 2024

Appendix E - Agricultural Plastics Recycling Group Quarterly Report – Q3 2024





Agricultural Plastics Recycling Group Quarterly Report

2024-Q2 | July 15, 2024 | Final



The pilot project is led by the multi-stakeholder Agricultural Plastics Recycling Group; funds were granted by the Government of Alberta and are administered by Alberta Beef Producers.

APRG Quarterly Report – July 15, 2024

Grain bag and twine collection tonnages were 122% and 126% respectively, of the average Q2 volume from the last four years.

To increase program awareness, work is underway to launch a fall twine collection contest. Contest rules are finalized, and a media firm will be contracted to create digital assets and administer targeted advertising during the contest period.

Based on the 2023 farmer survey results, several existing collection partners have agreed to add more twine collection sites within their municipalities over the coming months to increase program accessibility.

1. Collection Sites

The MD of Pincher Creek joined as a collection partner (Figure 1 & Table 1) in June of 2024, adding one new grain bag and twine collection site to the program.

There are 50 collection partners and 160 individual collection sites (Figure 2). One site collects only grain bags, 113 collect twine, and 46 collect both.

Cleanfarms continues to work to onboard additional grain bag and twine collection partners. Other geographic gap areas that are being considered and addressed are highlighted in Figure 2.

A detailed map of all current collection locations (not including the high-volume twine users) can be found [online](#).

2. Site Signage

No new site signs are being developed. Site signage and communication material for collection sites (Appendix A & B) are replaced as necessary.



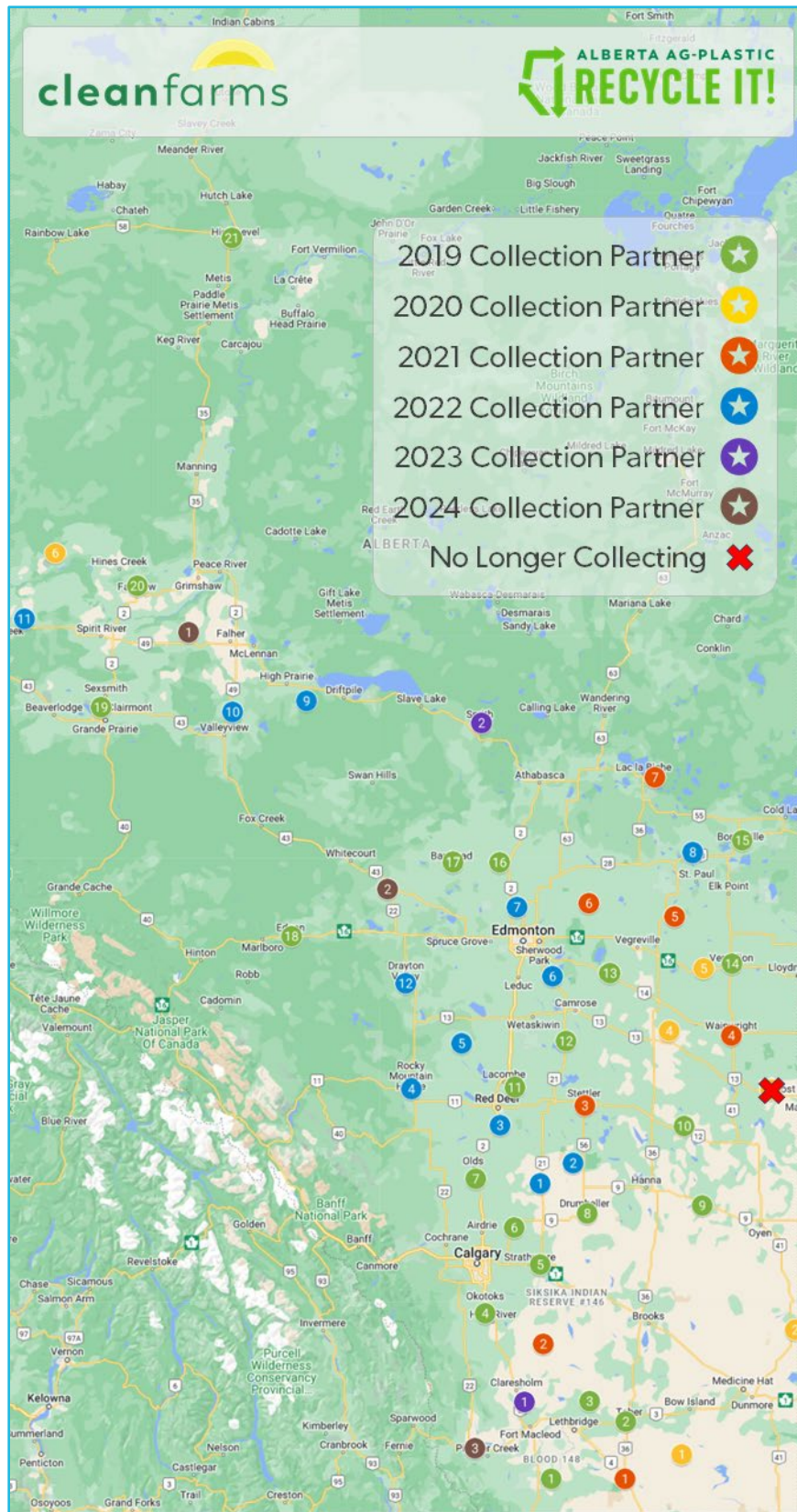


Figure 1. Geographic distribution of collection partners.

Table 1 – List of collection partners.

Collection Partner	Site Number	Year Joined Program
Cardston County	1	2019
MD of Taber	2	2019
Lethbridge County/DBS Environmental	3	2019
MD of Foothills/Foothills Regional Services Comm.	4	2019
Wheatland County	5	2019
Rocky View County	6	2019
Mountain View County (<i>twine only</i>)	7	2019
Drumheller & District Solid Waste Mgmt. Assoc.	8	2019
Special Areas 2,3,4/Big Country Waste Mgmt. Comm.	9	2019
County of Paintearth/Paintearth Regional Waste Mgmt.	10	2019
Lacombe County	11	2019
Camrose County	12	2019
Claystone Waste/Ryley Landfill	13	2019
County of Vermilion River	14	2019
MD of Bonnyville	15	2019
Westlock County/Westlock Regional Waste Mgmt. Comm.	16	2019
County of Barrhead	17	2019
Yellowhead County/Edson & District Recycling Society	18	2019
County of Grande Prairie	19	2019
MD of Fairview/North Peace Regional Landfill	20	2019
Mackenzie County/Mackenzie Regional Waste Mgmt. Comm.	21	2019
County of Forty Mile/South Forty Waste	1	2020
Cypress County	2	2020
MD of Provost	3	2020
Flagstaff County/Flagstaff Regional Solid Waste Mgmt.	4	2020
County of Minburn	5	2020
Clear Hills County	6	2020
County of Warner	1	2021
Vulcan County	2	2021
County of Stettler	3	2021
MD of Wainwright/Wainwright Regional Waste to Energy Authority	4	2021
County of Two Hills	5	2021
Lamont County/St. Michael Regional Solid Waste Commission	6	2021
Lac La Biche County (<i>twine only</i>)	7	2021
Kneehill County (<i>twine only</i>)	1	2022
Starland County	2	2022
Red Deer County	3	2022
Clearwater County (<i>twine only</i>)	4	2022
Ponoka County	5	2022
Leduc County (<i>twine only</i>)	6	2022
Sturgeon County (<i>twine only</i>)	7	2022
County of St. Paul (<i>twine only</i>)	8	2022
Big Lakes County	9	2022
MD of Greenview (<i>twine only</i>)	10	2022
Saddle Hills County	11	2022
Brazeau County (<i>twine only</i>)	12	2022
MD of Willow Creek	1	2023
MD of Lesser Slave River (<i>twine only</i>)	2	2023
Birch Hills County	1	2024
Lac Ste. Anne County (<i>twine only</i>)	2	2024
Crowsnest/Pincher Creek Regional Landfill	3	2024

Note: MD of Provost is no longer participating as a pilot collection partner.

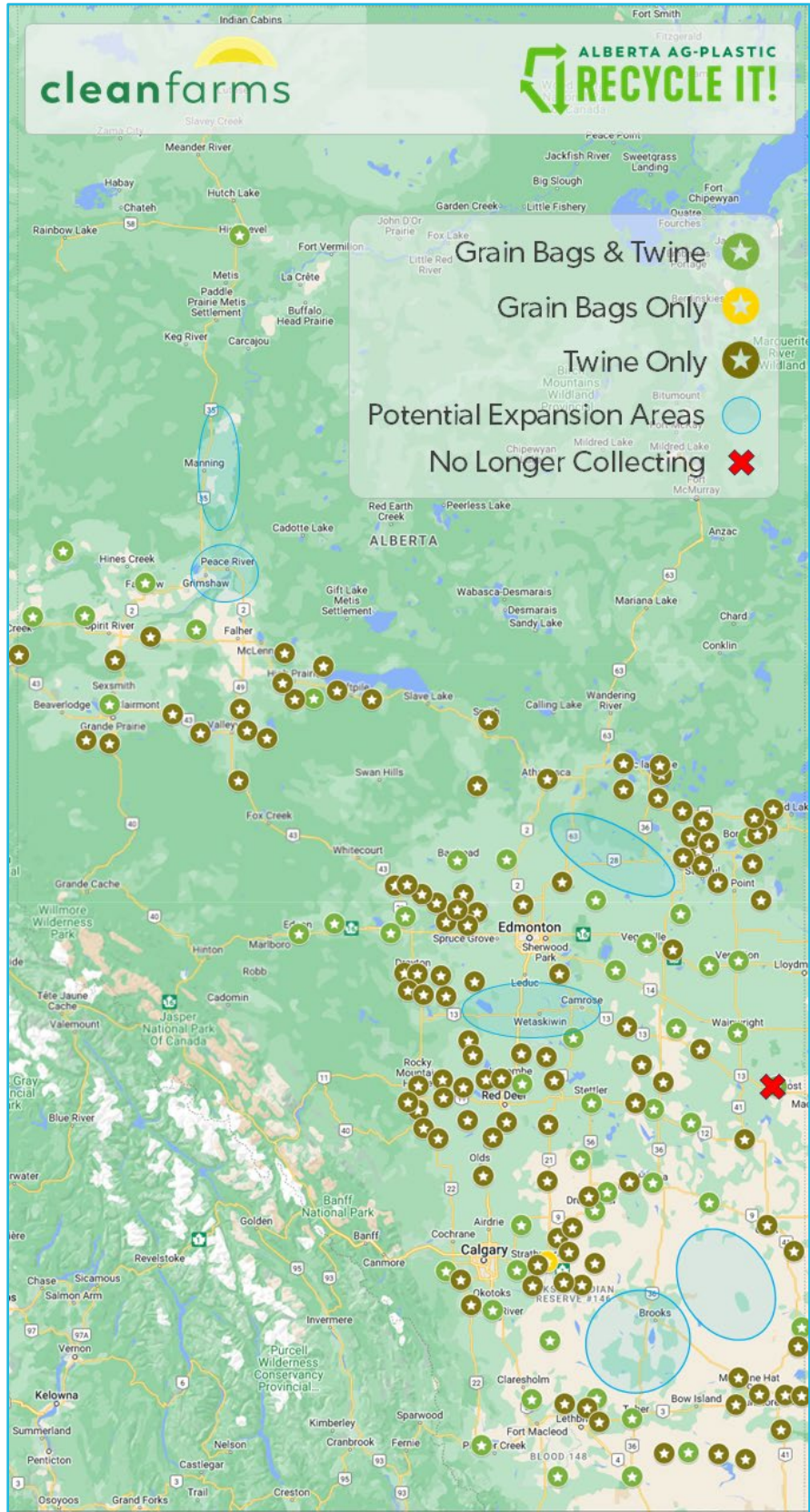


Figure 2. Geographic distribution of collection sites and interested municipalities.

3. Communications & Program Awareness

3.1 Communication & Awareness

Communication activities since the last report include:

- April: advertising (Appendix C)
 - [Alberta Beef Magazine](#) (Print/Digital)
- May: advertising (Appendix C)
 - [Alberta Beef Magazine](#) (Print/Digital)
 - May 2 Media Release: "[Alberta Ag Plastic. Recycle It! Program Extended Until December 2025!](#)" | [Alberta Ag Plastic. Recycle It! Le programme est prolongé jusqu'en décembre 2025 !](#)
 - May 7 CBC Calgary radio interview by Dave Gilson (not available online)
- June: advertising (Appendix C)
 - [Alberta Beef Magazine](#) (Print/Digital)
- June: Developed 4H twine contest rules

4. Tonnage Collected

Grain bag collection tonnages were 122%, while twine was 126% of the average Q2 volume from the last four years.

Since October 1, 2019, 3,899,643 kilograms (kg) of grain bags, twine, and other waste materials have been collected for recycling under the pilot program. The collections included 3,399,708 kg of grain bags, 499,935 kg of twine, and 109,760 kg of other waste materials. Thus, the total recyclable grain bags and twine is 3,789,883 kg.

During this quarter, 294,690 kg of grain bags were sent to recyclers in Alberta, and 37,345 kg of twine was sent for consolidation and baling. One bale of twine (450 kg) was sent to a test recycling market in the United States, and the remaining baled twine is stored until a recycling market is secured.

Tables 1 and 2 provide a breakdown of materials collected this quarter and collection since program inception, respectively.

Table 2 – Collection summary for Q2 2024

Grain Bags and Twine Sent for Recycling Apr - Jun 2024					
Site Name	County	Legacy Material (kg)		Pilot Collection (kg)	
		Grain Bags	Twine	Grain Bags	Twine
Ryley Landfill	Beaver County	-	-	-	-
Youngstown Regional Landfill	Special Areas 2, 3 & 4	-	-	6,870	1,710
Cardston County Composting Yard	Cardston County	-	-	-	-
Clairmont Landfill	County of Grande Prairie	-	-	-	-
Vermilion Waste Transfer Station	County of Vermilion River	-	-	10,800	-
Iron Springs Transfer Site	Lethbridge County	-	-	15,240	1,300
Drumheller & District Regional Landfill	Drumheller	-	-	13,565	-
Foothills Regional Landfill & Resource Recovery Centre	M.D. of Foothills	-	-	-	-
Prentiss Landfill	Lacombe County	-	-	18,765	835
MacKenzie Regional Waste Landfill	Mackenzie No. 23	-	-	-	-
Mountain View County Ag Shop Twine Collection	Mountain View County	N/A	-	N/A	930
Municipal District of Bonnyville Public Works Shop	MD of Bonnyville	-	-	-	-
MD of Taber Operations and Maintenance Building	MD of Taber	-	-	12,120	3,160
County of Barrhead Public Works Shop	County of Barrhead	-	-	9,130	-
Westlock Regional Landfill	Westlock County	-	-	-	-
North Peace Regional Landfill	MD of Fairview	-	-	-	-
Coronation Transfer Station	County of Paintearth	-	-	16,550	-
Irricana Transfer Site	Rocky View County	-	-	23,370	-
West Dried Meat Lake Regional Landfill	Camrose County	-	-	9,940	-
Wheatland County Agriculture Service Board Shop	Wheatland County	-	-	24,980	150
Edson & District Recycling Society	Yellowhead County	-	-	-	-
Cleardale Transfer Station	Clear Hills County	-	-	-	-
Foremost Transfer Station - South Forty Waste	County of Forty Mile No. 8	-	-	-	-
Mannville Waste Transfer Station	County of Minburn	-	-	13,660	-
Hilda Transfer Station	Cypress County	-	-	-	-
Flagstaff Waste Regional Landfill	Flagstaff County	-	-	35,675	-
Provost Regional Landfill	MD of Provost	-	-	-	-
County of Warner Ag Service Board Shop	County of Warner	-	-	-	1,645
Vulcan Waste Transfer Station	Vulcan County	-	-	-	1,530
Beaver Lake Landfill	Lac La Biche County	N/A	-	N/A	-
Two Hills Regional Landfill	County of Two Hills	-	-	-	-
Wainwright Regional Landfill	MD of Wainwright	-	-	21,415	-
Stettler County Operations Shop	County of Stettler	-	-	-	-
Horn Hill Transfer Station	Red Deer County	N/A	-	N/A	-
St. Michael Regional Landfill	Lamont County	-	-	-	-
Three Hills Transfer Station	Kneehill County	N/A	-	N/A	1,210
New Sarepta/Sunnybrook Waste Transfer Station	Leduc County	N/A	-	N/A	340
New Fish Creek Transfer Station	MD of Greenview	N/A	-	N/A	-
Bluffton Landfill	Ponoka County	N/A	-	N/A	410
Blueberry/Bonanza Transfer Site	Saddle Hills County	-	-	-	-
Rumsey/Michichi Transfer Station	Starland County	-	-	5,080	-
Central Transfer Station	Clearwater County	N/A	-	N/A	-
Ashmont/Mallaig Transfer Station	County of St. Paul	N/A	-	N/A	230
Rosieridge Landfill	Sturgeon County	N/A	-	N/A	-
Big Lakes County Regional Landfill	Big Lakes County	-	-	-	-
Brazeau County Shop	Brazeau County	N/A	-	N/A	640
Willow Creek Regional Landfill	MD of Willow Creek	-	-	-	1,510
Flatbush/Smith Transfer Station	MD of Lesser Slave River	N/A	-	N/A	-
Wanham/Tangent Transfer Stations	Birch Hills County	-	-	34,940	-
Mayerthorpe Transfer Station	Lac Ste. Anne County	-	-	-	3,880
Pincher Creek Landfill	MD of Pincher Creek	-	-	-	-
Athabasca Regional Landfill (often reported with Westlock)	Athabasca County	-	-	-	210
Grain Bag Recycler	AB Recyclers	N/A	N/A	N/A	220
Farm (non-pilot site)	AB Farms	-	-	22,590	1,100
Hay Processing Plants (non-pilot sites)	Southern Alberta	N/A	-	N/A	16,335
Quarterly Totals		-	-	294,690	37,345
Total Grain Bags		294,690		Total Twine	37,345
				Total Grain Bags and Twine	332,035

Note: County of Barrhead and Westlock County were previously reported as one collection location.

Table 3 – Collection summary since program inception

Grain Bags and Twine Sent for Recycling Oct 2019 - Present					
Site Name	County	Legacy Material (kg)		Pilot Collection (kg)	
		Grain Bags	Twine	Grain Bags	Twine
Riley Landfill	Beaver County	-	-	26,440	1,475
Youngstown Regional Landfill	Special Areas 2, 3 & 4	-	-	19,840	3,810
Cardston County Composting Yard	Cardston County	-	-	7,945	-
Clairmont Landfill	County of Grande Prairie	22,020	-	18,300	-
Vermilion Waste Transfer Station	County of Vermilion River	9,780	-	104,355	2,063
Iron Springs Transfer Site	Lethbridge County	-	-	135,276	19,393
Drumheller & District Regional Landfill	Drumheller	-	6,320	138,573	5,860
Foothills Regional Landfill & Resource Recovery Centre	M.D. of Foothills	-	-	103,695	3,500
Prentiss Landfill	Lacombe County	-	7,110	143,545	12,180
MacKenzie Regional Waste Landfill	Mackenzie No. 23	-	-	-	-
Mountain View County Ag Shop Twine Collection	Mountain View County	N/A	-	N/A	10,396
Municipal District of Bonnyville Public Works Shop	MD of Bonnyville	10,670	-	33,250	6,010
MD of Taber Operations and Maintenance Building	MD of Taber	-	-	118,360	13,125
County of Barrhead Public Works Shop	County of Barrhead	-	-	9,130	8,284
Westlock Regional Landfill	Westlock County	-	2,000	-	11,970
North Peace Regional Landfill	MD of Fairview	57,870	-	114,320	1,550
Coronation Transfer Station	County of Paintearth	-	-	52,570	3,982
Irricana Transfer Site	Rocky View County	64,139	7,800	250,330	22,304
West Dried Meat Lake Regional Landfill	Camrose County	49,250	1,250	124,630	922
Wheatland County Agriculture Service Board Shop	Wheatland County	-	-	351,153	2,694
Edson & District Recycling Society	Yellowhead County	37,860	-	29,480	-
Cleardale Transfer Station	Clear Hills County	-	-	15,850	-
Foremost Transfer Station - South Forty Waste	County of Forty Mile No. 8	-	-	50,100	240
Mannville Waste Transfer Station	County of Minburn	33,060	12,970	141,290	8,853
Hilda Transfer Station	Cypress County	11,520	-	4,810	2,134
Flagstaff Waste Regional Landfill	Flagstaff County	-	-	137,925	7,395
Provost Regional Landfill	MD of Provost	33,060	-	8,250	1,513
County of Warner Ag Service Board Shop	County of Warner	-	-	32,630	4,510
Vulcan Waste Transfer Station	Vulcan County	-	-	104,480	1,530
Beaver Lake Landfill	Lac La Biche County	N/A	493	N/A	-
Two Hills Regional Landfill	County of Two Hills	-	-	46,015	-
Wainwright Regional Landfill	MD of Wainwright	62,405	-	29,640	-
Stettler County Operations Shop	County of Stettler	-	-	10,557	620
Horn Hill Transfer Station	Red Deer County	N/A	-	N/A	1,819
St. Michael Regional Landfill	Lamont County	-	-	17,880	1,710
Three Hills Transfer Station	Kneehill County	N/A	-	N/A	1,874
New Sarepta/Sunnybrook Waste Transfer Station	Leduc County	N/A	-	N/A	957
New Fish Creek Transfer Station	MD of Greenview	N/A	-	N/A	-
Bluffton Landfill	Ponoka County	N/A	-	N/A	410
Blueberry/Bonanza Transfer Site	Saddle Hills County	134,270	-	62,080	-
Rumsey/Michichi Transfer Station	Starland County	-	-	35,945	175
Central Transfer Station	Clearwater County	N/A	-	N/A	1,857
Ashmont/Mallaig Transfer Station	County of St. Paul	N/A	-	N/A	820
Roseridge Landfill	Sturgeon County	N/A	-	N/A	-
Big Lakes County Regional Landfill	Big Lakes County	-	-	-	345
Brazeau County Shop	Brazeau County	N/A	-	N/A	880
Willow Creek Regional Landfill	MD of Willow Creek	-	-	23,950	3,480
Flatbush/Smith Transfer Station	MD of Lesser Slave River	N/A	-	N/A	-
Wanham/Tangent Transfer Stations	Birch Hills County	18,270	-	52,710	-
Mayerthorpe Transfer Station	Lac Ste. Anne County	-	-	-	3,880
Pincher Creek Landfill	MD of Pincher Creek	-	-	-	8,230
Athabasca Regional Landfill (often reported with Westlock)	Athabasca County	-	-	-	210
Grain Bag Recycler	AB Recyclers	N/A	N/A	N/A	2,590
Farm (non-pilot site)	AB Farms	-	-	300,230	1,100
Hay Processing Plants (non-pilot sites)	Southern Alberta	N/A	-	N/A	275,342
Totals		544,174	37,943	2,855,534	461,992
Total Grain Bags		3,399,708		Total Twine	499,935
				Total Grain Bags and Twine	3,899,643
Disposal Waste Contained in 2019 Legacy Grain Bag Material					
PolyAg Recycling Ltd.		(109,760)	-	-	-
Total Grain Bags Subtract Legacy Waste		3,289,948		Total Twine	499,935
				Total Grain Bags and Twine Subtract Legacy Waste	3,789,883

Note: County of Barrhead and Westlock County were previously reported as one collection location.

5. Quarterly Financial Report

The income statement for 2019-Q2 through 2024-Q2 follows:

Alberta Ag-Plastic. <i>Recycle It!</i> Pilot Program - Cleanfarms Financial Report											
April 2024 - March 2025						Years 1-5 & Program Total					
Revenue	Apr - Jun	July - Sep	Oct - Dec	Jan - Mar	Total	Apr '19 - Mar '20	Apr '20 - Mar '21	Apr '21 - Mar '22	Apr '22 - Mar '23	Apr '23 - Mar '24	Program Total
<i>Funds Transferred to Cleanfarms from Alberta Beef Producers</i>											
<i>Studies</i>	-	-	-	-	-	45,590	-	-	-	55,200	100,790
<i>Communications</i>	4,191	-	-	-	4,191	23,496	10,200	8,191	67,499	35,358	144,744
<i>Net Collection Costs</i>	22,757	-	-	-	22,757	38,838	71,469	44,070	42,363	88,360	285,100
<i>Program Admin (Cleanfarms)</i>	17,500	-	-	-	17,500	65,000	50,000	50,000	69,289	70,466	304,755
Total Revenue from Alberta Beef Producers	\$ 44,448	\$ -	\$ -	\$ -	\$ 44,448	\$172,924	\$131,670	\$102,261	\$179,151	\$249,384	\$ 835,390
<i>Recycling Revenue</i>											
<i>Revenue from Marketing Materials</i>	24,138	-	-	-	24,138	6,260	68,427	105,181	108,038	75,698	363,603
Total Program Revenue	\$ 68,586	\$ -	\$ -	\$ -	\$ 68,586	\$179,184	\$200,097	\$207,442	\$287,188	\$325,082	\$ 1,198,993
Expenses											
<i>Studies</i>											
Ag Waste Characterization Study	-	-	-	-	-	10,000	-	-	-	-	10,000
Stakeholder Groups Survey	-	-	-	-	-	28,090	-	-	-	55,200	83,290
Market Analysis	-	-	-	-	-	7,500	-	-	-	-	7,500
<i>Communications</i>											
Brand Development / Communication Plan	311	-	-	-	311	10,000	55	7,936	59,209	22,987	100,187
Printing / Delivery Costs	3,880	-	-	-	3,880	3,496	10,145	255	7,915	12,371	34,182
Design Costs	-	-	-	-	-	10,000	-	-	375	-	10,375
<i>Collection Costs</i>											
Contractor Expenses	31,114	-	-	-	31,114	24,120	74,048	111,416	118,178	127,941	455,704
Collection Bags	45	-	-	-	45	17,884	23,776	278	11,453	1,160	54,551
Incentive Payments	15,736	-	-	-	15,736	3,093	42,072	37,556	20,770	34,956	138,448
Total Collection Costs	46,895	-	-	-	46,895	45,098	139,897	149,251	150,401	164,058	648,704
<i>Program Admin (Cleanfarms)</i>	17,500	-	-	-	17,500	65,000	50,000	50,000	69,289	70,466	304,755
Total Cleanfarms and Operational Expenses	\$ 68,586	\$ -	\$ -	\$ -	\$ 68,586	\$179,184	\$200,097	\$207,442	\$287,188	\$325,082	\$ 1,198,993
<i>Committee</i>											
Secretariat - APRA ¹	-	-	-	-	-	17,638	4,722	11,177	5,324	10,426	49,287
Technical Oversight - RCA ¹	-	-	-	-	-	3,054	687	2,327	-	-	6,068
<i>ABP Accounting/Grant administrator¹</i>	-	-	-	-	-	900	1,200	1,200	1,200	-	4,500
Total Committee and Administrator Expenses	\$ -	\$ -	\$ -	\$ -	\$ -	\$ 21,592	\$ 6,609	\$ 14,704	\$ 6,524	\$ 10,426	\$ 59,855
Total Program Expenses	\$ 68,586	\$ -	\$ -	\$ -	\$ 68,586	\$200,775	\$206,706	\$222,146	\$293,712	\$335,509	\$ 1,258,848

Notes: 1. As reported to Cleanfarms.

The following is a list of outstanding line items from 2024-Q2 which are not included in the above income statement; all pending invoices are within budget:

- Incentive payments (approximately \$1,760 – waiting to receive invoices).
- Contractor expenses (estimated \$9,140 – processing invoices).
- Revenue (estimated \$6,510 – waiting to receive payment).

6. Other Activities and Key Dates

Events & Collection Site Communications

- In-person events:
 - None
- Remote Events/Webinars
 - April 24 – Birch Hills ASB program education presentation.
 - June 17 – Roseridhge waste program overview presentation.

Appendix A – Signage



Grain Bag Site Sign



Twine Site Sign

cleanfarms Grain Bags and Twine Prepare it Properly ALBERTA AG-PLASTIC RECYCLE IT!

<p>✓ Yes!</p> <p>Machine Rolled & Secured with Twine</p>  <p>✓</p>	<p>✗ No Thanks!</p>		
<p>Clean & Bagged Twine</p>  <p>✓</p>	<p>Hand-Rolled Bags</p>  <p>✗</p>	<p>Loose Drop-Offs</p>  <p>✗</p>	<p>Silage Tarps or Other</p>  <p>✗</p>
	<p>Net Wrap</p>  <p>✗</p>	<p>Nylon Rope/Sisal Twine</p>  <p>✗</p>	<p>Hay or Other Material</p>  <p>✗</p>

Alberta The pilot project is led by the multi-stakeholder Agricultural Plastics Recycling Group; funds were granted by the Government of Alberta and are administered by Alberta Beef Producers.

cleanfarms.ca | 403-942-6012

Combined Grain Bag and Twine Site Sign

Appendix B – Communication Assets

Grain Bag Recycling

3 steps to ensure your used grain bags can be accepted and recycled:

Grain bags that are returned loosely rolled require more space, are time consuming and difficult to manage with equipment, and they weigh very little, which is inefficient for transportation to a recycling facility.

1 Remove Debris
Grain bags need to be free of as much foreign material (spoilage, dirt, rocks, etc.) as possible.
Using a proper grain bag roller will help achieve that objective.



2 Roll
Grain bags must be rolled tightly with a standalone mechanical grain bag roller* or old haybaler, and then secured tightly with twine.



3 Return
Bring grain bags that are rolled and tied securely to your local pilot collection site.
For your nearest collection site, visit AlbertaAgPlastics.ca



*Most grain bag extractors roll the bags too loosely. Collection sites cannot accept unrolled, extractor rolled, or hand-rolled grain bags. Any improperly rolled bags may be rejected, subject to a landfill tipping fee or to additional charges at drop off.

 **Cleanfarms.ca**
403.942.6012 | 877.622.4460
info@cleanfarms.ca | @cleanfarms

 The pilot project is led by the multi-stakeholder Agricultural Plastics Recycling Group, funds were granted by the Government of Alberta and are administered by Alberta Beef Producers.

Updated Grain Bag Preparation Brochure

Twine Recycling

3 steps to ensure your used twine can be accepted and recycled:

Pick up, free, twine collection bags from collection sites and select County/MD offices.

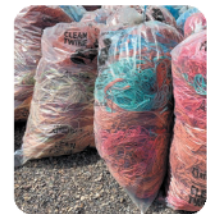
1 Shake
Remove as much debris, snow, or ice as possible.
Run the twine through a gloved hand to help remove debris.



2 Bag
Place loose twine* in a collection bag & secure tightly closed with twine or a zip tie.



3 Return
Bring full bags of twine to your local collection site.
For your nearest collection site, visit AlbertaAgPlastics.ca



*Plastic twine only. Bags of twine mixed with netting, sisal twine, or other materials may be rejected, subject to a landfill tipping fee or to additional charges at dropoff.

 **Cleanfarms.ca**
403.942.6012 | 877.622.4460
info@cleanfarms.ca | @cleanfarms

 The pilot project is led by the multi-stakeholder Agricultural Plastics Recycling Group, funds were granted by the Government of Alberta and are administered by Alberta Beef Producers.

Updated Twine Preparation Brochure



Recycle Used Baler Twine

Preparing twine for recycling

Pick up, free, twine collection bags from pilot collection sites and select County/MD offices.

1. Shake to remove debris, snow or ice.
2. Place loose twine in a collection bag.
Plastic twine only. Bags of twine mixed with netting, sisal twine, or other materials will be rejected.
3. Return to an **Alberta Ag Plastic. Recycle It!** pilot collection site. Call ahead for unloading assistance.

Find recycling details and a collection site near you:

- For more about **Alberta Ag Plastic. Recycle It!** – go to **AlbertaAgPlastics.ca** or scan the QR code.
- To see what other ag materials Cleanfarms recycles, go to **Cleanfarms.ca**



Cleanfarms.ca
info@cleanfarms.ca @cleanfarms



The pilot project is led by the multi-stakeholder Agricultural Plastics Recycling Group; funds were granted by the Government of Alberta and are administered by Alberta Beef Producers.

Twine Retailer/Municipal Poster



Got used plastic baler twine?
Recycle it! | AlbertaAgPlastics.ca
 for details and collection sites



Twine 1920x1080 Retailer/Municipal TV Placement



Got used plastic baler twine?
Recycle it! | AlbertaAgPlastics.ca
 for details and collection sites



Twine Retailer/Municipal 728x90 Web Banner

**Got used plastic
 baler twine?**
Recycle it!



AlbertaAgPlastics.ca
 for details and collection sites



Twine 800x800 Retailer/Municipal Web Capsule

Appendix C – Communication Activities

Need a better way to manage used baler twine? Recycle it!



Cleanfarms operates the **Alberta Ag-Plastic. Recycle It!** pilot program on behalf of Alberta Beef Producers and the Agricultural Plastics Recycling Group to help Alberta farmers improve sustainability by recycling baler twine.

Recycle Baler Twine

BAG – get a free recycling bag from a participating collection site and fill with used plastic baler twine.



RETURN – close top of bag and bring back to the collection site.

*Netting/net wrap not accepted for recycling for technical reasons. If added, the whole bag will be unrecyclable.



- For more about **Alberta Ag-Plastic. Recycle It!** – go to **AlbertaAgPlastics.ca**
- To see what other ag materials Cleanfarms recycles, go to **Cleanfarms.ca**

Cleanfarms.ca

info@cleanfarms.ca   @cleanfarms

 cleanfarms

 ALBERTA AG-PLASTIC
RECYCLE IT!

 Alberta

The pilot project is led by the multi-stakeholder Agricultural Plastics Recycling Group; funds were granted by the Government of Alberta and are administered by Alberta Beef Producers.

Advertisement for Alberta Beef Magazine, Alberta Farmer Express,
and Beef Illustrated

Need a better way to manage used baler twine? **Recycle it!**



Cleanfarms operates the **Alberta Ag-Plastic. Recycle It!** pilot program on behalf of Alberta Beef Producers and the Agricultural Plastics Recycling Group to help Alberta farmers improve sustainability by recycling baler twine.

Recycle Baler Twine


BAG – get a free recycling bag from a participating collection site and fill with used plastic baler twine.
RETURN – close top of bag and bring back to the collection site.

*Netting/net wrap not accepted for recycling for technical reasons. If added, the whole bag will be unrecyclable.

- For more about **Alberta Ag-Plastic. Recycle It!** – go to **AlbertaAgPlastics.ca**
- To see what other ag materials Cleanfarms recycles, go to **Cleanfarms.ca**



Cleanfarms.ca

info@cleanfarms.ca   @cleanfarms

cleanfarms

**ALBERTA AG-PLASTIC
RECYCLE IT!**

Alberta

The pilot project is led by the multi-stakeholder Agricultural Plastics Recycling Group; funds were granted by the Government of Alberta and are administered by Alberta Beef Producers.



Agricultural Plastics Recycling Group Quarterly Report

2024-Q3 | October 15, 2024 | Final Report



The pilot project is led by the multi-stakeholder Agricultural Plastics Recycling Group; funds were granted by the Government of Alberta and are administered by Alberta Beef Producers.

APRG Quarterly Report – October 15, 2024

Grain bag and twine collection tonnages were consistent with the average tonnage collected for Q3 since program inception.

As part of the continued efforts to educate Alberta farming communities about how to prepare and recycle agricultural plastics once used on the farm, Cleanfarms is conducting a used plastic baler twine collection contest to encourage environmental sustainability among the next generation of Alberta farmers.

'The Great Twine Round-Up' is set to launch on October 24, 2024, known as Plastics Day, during the globally recognized Waste Reduction Week. As of this report, a campaign/branding document has been finalized, while all relevant social and digital outreach and advertising assets are near completion. The contest will run from November 1, 2024, through May 31, 2025.

1. Collection Sites

No new collection partners have been added to the program.

There are 50 collection partners and 160 individual collection sites (Figure 2). One site collects only grain bags, 113 collect twine, and 46 collect both.

Cleanfarms continues to work to onboard additional grain bag and twine collection partners. Other geographic gap areas that are being considered and addressed are highlighted in Figure 2.

A detailed map of all current collection locations (not including the high-volume twine users) can be found [online](#).

2. Site Signage

No new site signs are being developed. Site signage and communication material for collection sites (Appendix A & B) are replaced as necessary.



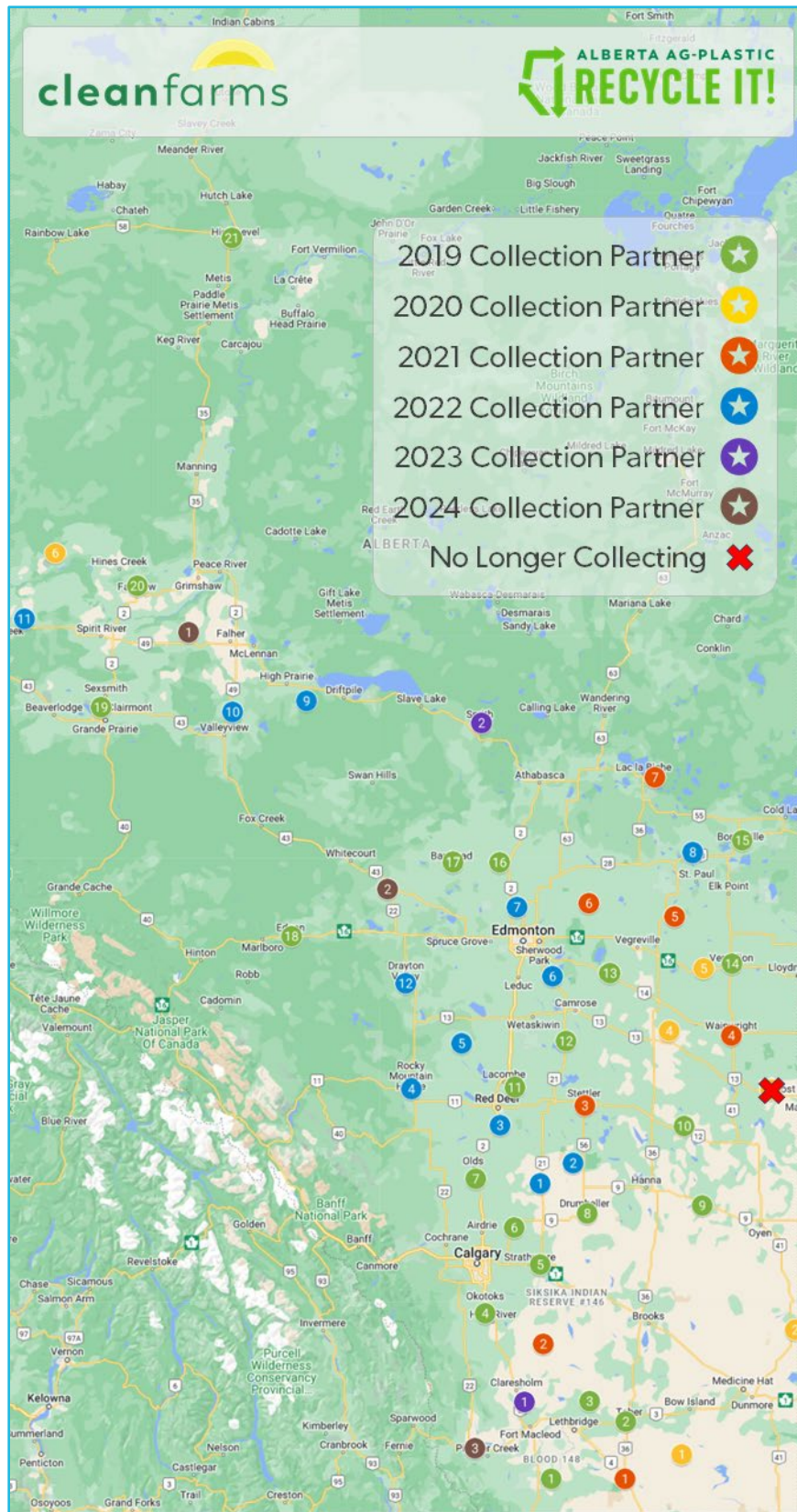


Figure 1. Geographic distribution of collection partners.

Table 1 – List of collection partners.

Collection Partner	Site Number	Year Joined Program
Cardston County	1	2019
MD of Taber	2	2019
Lethbridge County/DBS Environmental	3	2019
MD of Foothills/Foothills Regional Services Comm.	4	2019
Wheatland County	5	2019
Rocky View County	6	2019
Mountain View County (<i>twine only</i>)	7	2019
Drumheller & District Solid Waste Mgmt. Assoc.	8	2019
Special Areas 2,3,4/Big Country Waste Mgmt. Comm.	9	2019
County of Paintearth/Paintearth Regional Waste Mgmt.	10	2019
Lacombe County	11	2019
Camrose County	12	2019
Claystone Waste/Ryley Landfill	13	2019
County of Vermilion River	14	2019
MD of Bonnyville	15	2019
Westlock County/Westlock Regional Waste Mgmt. Comm.	16	2019
County of Barrhead	17	2019
Yellowhead County/Edson & District Recycling Society	18	2019
County of Grande Prairie	19	2019
MD of Fairview/North Peace Regional Landfill	20	2019
Mackenzie County/Mackenzie Regional Waste Mgmt. Comm.	21	2019
County of Forty Mile/South Forty Waste	1	2020
Cypress County	2	2020
MD of Provost	3	2020
Flagstaff County/Flagstaff Regional Solid Waste Mgmt.	4	2020
County of Minburn	5	2020
Clear Hills County	6	2020
County of Warner	1	2021
Vulcan County	2	2021
County of Stettler	3	2021
MD of Wainwright/Wainwright Regional Waste to Energy Authority	4	2021
County of Two Hills	5	2021
Lamont County/St. Michael Regional Solid Waste Commission	6	2021
Lac La Biche County (<i>twine only</i>)	7	2021
Kneehill County (<i>twine only</i>)	1	2022
Starland County	2	2022
Red Deer County	3	2022
Clearwater County (<i>twine only</i>)	4	2022
Ponoka County	5	2022
Leduc County (<i>twine only</i>)	6	2022
Sturgeon County (<i>twine only</i>)	7	2022
County of St. Paul (<i>twine only</i>)	8	2022
Big Lakes County	9	2022
MD of Greenview (<i>twine only</i>)	10	2022
Saddle Hills County	11	2022
Brazeau County (<i>twine only</i>)	12	2022
MD of Willow Creek	1	2023
MD of Lesser Slave River (<i>twine only</i>)	2	2023
Birch Hills County	1	2024
Lac Ste. Anne County (<i>twine only</i>)	2	2024
Crowsnest/Pincher Creek Regional Landfill	3	2024

Note: MD of Provost is no longer participating as a pilot collection partner.

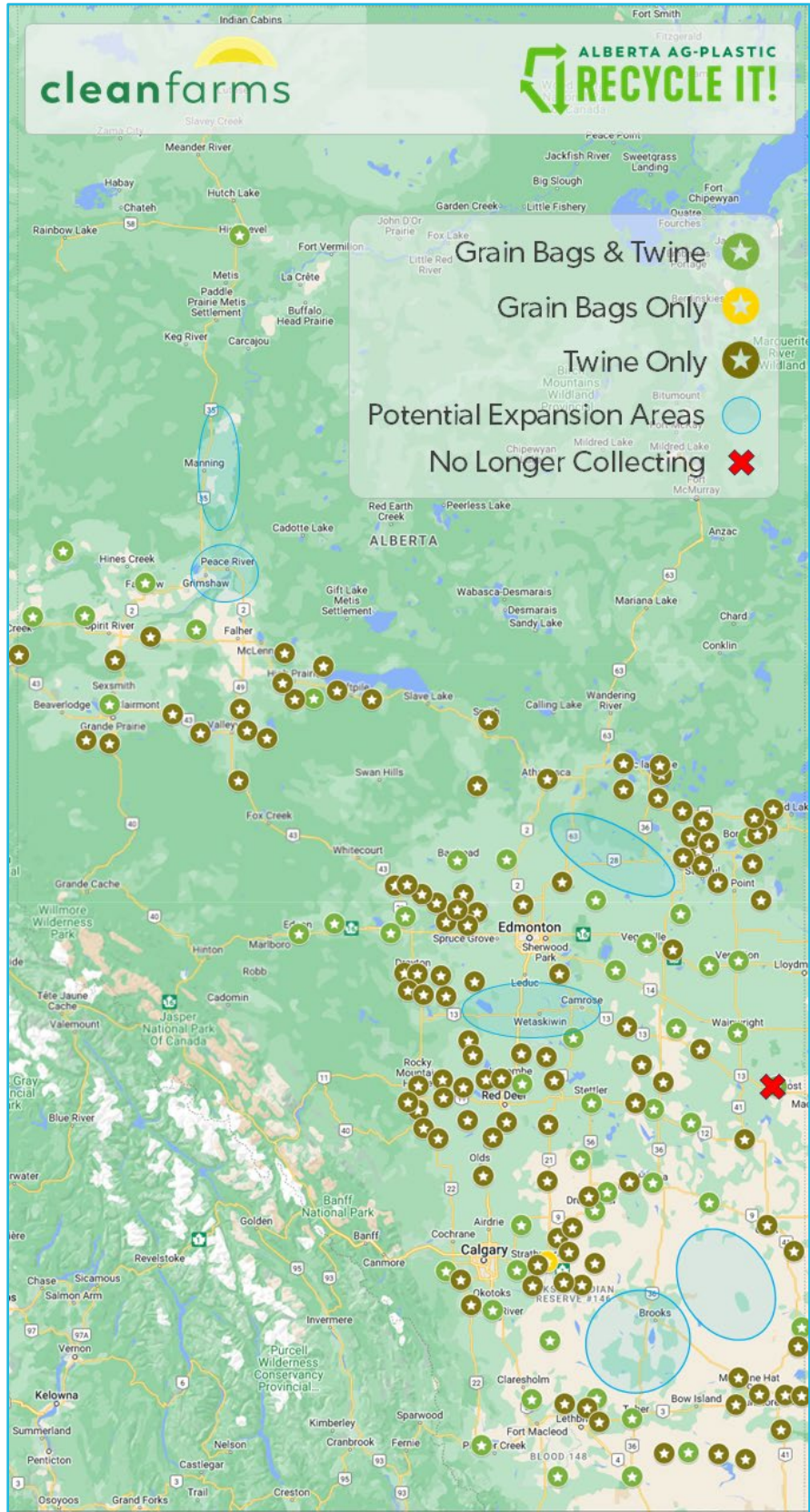


Figure 2. Geographic distribution of collection sites and interested municipalities.

3. Communications & Program Awareness

3.1 Communication & Awareness

Communication activities since the last report include:

Paid advertising with a focus on twine recycling (Appendix C)

- July 2024 - [Alberta Beef Magazine](#) - Inside front cover
- August 2024 - [Alberta Beef Magazine](#) - Feedlot special – p 2/40
- September - [Alberta Beef Magazine](#) – p. 14/40

Paid advertising with a focus on twine and grain bag recycling (Appendix C)

- September 2024 – Alberta Beef Producers

Partner Content: Lethbridge County Newsletter

- Developed a 300-word article on 'The Great Twine Round-Up' contest for Lethbridge County fall Newsletter.
- The article was also distributed to all other program partners for use in their newsletters.

Twine recycling video

- Created a how-to recycle twine instructional [video](#) that is available on the '[Alberta Ag Plastic. Recycle-It!](#)' program details page of [cleanfarms.ca](#)
- A social media amplification post was developed for the video and will be launched at the end of October.
- The video was developed and paid for by Cleanfarms, separate from the 'Alberta Ag Plastic. Recycle It!' pilot and therefore does not include program branding as it is used across all prairie provinces.

3.2 The Great Twine Round-Up Contest

As part of the continued efforts to educate Alberta farming communities about how to prepare and recycle agricultural plastics once used on the farm, Cleanfarms is conducting a used plastic baler twine collection contest to encourage environmental sustainability among the next generation of Alberta farmers.

The Great Twine Round-Up contest will launch on October 24, 2024, known as Plastics Day, during the globally recognized Waste Reduction Week. It will run from November 1, 2024, through May 31, 2025, and is open to all Alberta residents. Full contest details will be available at [GreatTwineRoundUp.com](#).

The primary goal of this contest is to generate more provincial awareness about the availability of recycling used baler twine in Alberta. The secondary goal is to increase used baler twine recycling behaviour, and therefore, the volume of used baler twine brought to collection sites throughout the province.

Activities since the last report include:

- Hired media/social media firm for branding/program development.
- Developed program work plan to cover the October 2024 to June 2025 timeframe.

- The program's brand identity, key messages, website wireframe, and photos were drafted and will be complete for the launch on October 24, 2024.
- Draft program guidelines were completed and are being finalized.

4. Tonnage Collected

Grain bag and twine collection tonnages were consistent with the average tonnage collected for Q3 since program inception.

Since October 1, 2019, 4,018,669 kilograms (kg) of grain bags, twine, and other waste materials have been collected for recycling under the pilot program. The collections included 3,498,538 kg of grain bags, 520,131 kg of twine, and 109,760 kg of other waste materials. Thus, the total recyclable grain bags and twine is 3,908,909 kg.

During this quarter, 98,830 kg of grain bags were sent to recyclers in Alberta, 28,480 kg of twine was sent for consolidation and baling, and 60,840 kg of twine previously consolidated and baled was sent to recyclers in British Columbia and Ontario for recycling.

Tables 1 and 2 provide a breakdown of materials collected this quarter and collection since program inception, respectively.

Table 2 – Collection summary for Q2 2024

Grain Bags and Twine Sent for Recycling Jul - Sep 2024					
Site Name	County	Legacy Material (kg)		Pilot Collection (kg)	
		Grain Bags	Twine	Grain Bags	Twine
Ryle Landfill	Beaver County	-	-	-	-
Youngstown Regional Landfill	Special Areas 2, 3 & 4	-	-	-	-
Cardston County Composting Yard	Cardston County	-	-	-	-
Clairmont Landfill	County of Grande Prairie	-	-	13,190	475
Vermilion Waste Transfer Station	County of Vermilion River	-	-	-	-
Iron Springs Transfer Site	Lethbridge County	-	-	-	1,000
Drumheller & District Regional Landfill	Drumheller	-	-	-	-
Foothills Regional Landfill & Resource Recovery Centre	M.D. of Foothills	-	-	9,430	-
Prentiss Landfill	Lacombe County	-	-	-	230
MacKenzie Regional Waste Landfill	Mackenzie No. 23	-	-	-	-
Mountain View County Ag Shop Twine Collection	Mountain View County	N/A	-	N/A	-
Municipal District of Bonnyville Public Works Shop	MD of Bonnyville	-	-	-	-
MD of Taber Operations and Maintenance Building	MD of Taber	-	-	-	-
County of Barrhead Public Works Shop	County of Barrhead	-	-	-	-
Westlock Regional Landfill	Westlock County	-	-	-	-
North Peace Regional Landfill	MD of Fairview	-	-	-	-
Coronation Transfer Station	County of Paintearth	-	-	-	-
Irricana Transfer Site	Rocky View County	-	-	-	-
West Dried Meat Lake Regional Landfill	Camrose County	-	-	1,780	-
Wheatland County Agriculture Service Board Shop	Wheatland County	-	-	-	555
Edson & District Recycling Society	Yellowhead County	-	-	-	-
Cleardale Transfer Station	Clear Hills County	-	-	13,050	-
Foremost Transfer Station - South Forty Waste	County of Forty Mile No. 8	-	-	-	-
Mannville Waste Transfer Station	County of Minburn	-	-	-	-
Hilda Transfer Station	Cypress County	-	-	-	-
Flagstaff Waste Regional Landfill	Flagstaff County	-	-	-	-
Provost Regional Landfill	MD of Provost	-	-	-	-
County of Warner Ag Service Board Shop	County of Warner	-	-	-	-
Vulcan Waste Transfer Station	Vulcan County	-	-	16,450	-
Beaver Lake Landfill	Lac La Biche County	N/A	-	N/A	-
Two Hills Regional Landfill	County of Two Hills	-	-	-	-
Wainwright Regional Landfill	MD of Wainwright	-	-	-	-
Stettler County Operations Shop	County of Stettler	-	-	-	-
Horn Hill Transfer Station	Red Deer County	N/A	-	N/A	-
St. Michael Regional Landfill	Lamont County	-	-	15,890	-
Three Hills Transfer Station	Kneehill County	N/A	-	N/A	-
New Sarepta/Sunnybrook Waste Transfer Station	Leduc County	N/A	-	N/A	135
New Fish Creek Transfer Station	MD of Greenview	N/A	-	N/A	-
Bluffton Landfill	Ponoka County	N/A	-	N/A	-
Blueberry/Bonanza Transfer Site	Saddle Hills County	-	-	29,040	-
Rumsey/Michichi Transfer Station	Starland County	-	-	-	-
Central Transfer Station	Clearwater County	N/A	-	N/A	7,615
Ashmont/Mallaig Transfer Station	County of St. Paul	N/A	-	N/A	-
Rosieridge Landfill	Sturgeon County	N/A	-	N/A	-
Big Lakes County Regional Landfill	Big Lakes County	-	-	-	240
Brazeau County Shop	Brazeau County	N/A	-	N/A	-
Willow Creek Regional Landfill	MD of Willow Creek	-	-	-	-
Flatbush/Smith Transfer Station	MD of Lesser Slave River	N/A	-	N/A	-
Wanham/Tangent Transfer Stations	Birch Hills County	-	-	-	-
Mayerthorpe Transfer Station	Lac Ste. Anne County	-	-	-	-
Pincher Creek Landfill	MD of Pincher Creek	-	-	-	-
Athabasca Regional Landfill (often reported with Westlock)	Athabasca County	-	-	-	-
Grain Bag Recycler	AB Recyclers	N/A	N/A	N/A	-
Farm (non-pilot site)	AB Farms	-	-	-	-
Hay Processing Plants (non-pilot sites)	Southern Alberta	N/A	-	N/A	18,230
Quarterly Totals		-	-	98,830	28,480
Total Grain Bags		98,830		Total Twine	28,480
				Total Grain Bags and Twine	127,310

Note: County of Barrhead and Westlock County were previously reported as one collection location.

Table 3 – Collection summary since program inception

Grain Bags and Twine Sent for Recycling Oct 2019 - Present					
Site Name	County	Legacy Material (kg)		Pilot Collection (kg)	
		Grain Bags	Twine	Grain Bags	Twine
Riley Landfill	Beaver County	-	-	26,440	1,475
Youngstown Regional Landfill	Special Areas 2, 3 & 4	-	-	19,840	3,810
Cardston County Composting Yard	Cardston County	-	-	7,945	-
Clairmont Landfill	County of Grande Prairie	22,020	-	31,490	475
Vermilion Waste Transfer Station	County of Vermilion River	9,780	-	104,355	2,063
Iron Springs Transfer Site	Lethbridge County	-	-	135,276	20,393
Drumheller & District Regional Landfill	Drumheller	-	6,320	138,573	5,860
Foothills Regional Landfill & Resource Recovery Centre	M.D. of Foothills	-	-	113,125	3,500
Prentiss Landfill	Lacombe County	-	7,110	143,545	12,410
MacKenzie Regional Waste Landfill	Mackenzie No. 23	-	-	-	-
Mountain View County Ag Shop Twine Collection	Mountain View County	N/A	-	N/A	10,396
Municipal District of Bonnyville Public Works Shop	MD of Bonnyville	10,670	-	33,250	6,010
MD of Taber Operations and Maintenance Building	MD of Taber	-	-	118,360	13,125
County of Barrhead Public Works Shop	County of Barrhead	-	-	9,130	-
Westlock Regional Landfill	Westlock County	-	2,000	-	11,970
North Peace Regional Landfill	MD of Fairview	57,870	-	114,320	1,550
Coronation Transfer Station	County of Paintearth	-	-	52,570	3,982
Irricana Transfer Site	Rocky View County	64,139	7,800	250,330	22,304
West Dried Meat Lake Regional Landfill	Camrose County	49,250	1,250	126,410	922
Wheatland County Agriculture Service Board Shop	Wheatland County	-	-	351,153	3,249
Edson & District Recycling Society	Yellowhead County	37,860	-	29,480	-
Cleardale Transfer Station	Clear Hills County	-	-	28,900	-
Foremost Transfer Station - South Forty Waste	County of Forty Mile No. 8	-	-	50,100	240
Mannville Waste Transfer Station	County of Minburn	33,060	12,970	141,290	8,853
Hilda Transfer Station	Cypress County	11,520	-	4,810	2,134
Flagstaff Waste Regional Landfill	Flagstaff County	-	-	137,925	7,395
Provost Regional Landfill	MD of Provost	33,060	-	8,250	1,513
County of Warner Ag Service Board Shop	County of Warner	-	-	32,630	4,510
Vulcan Waste Transfer Station	Vulcan County	-	-	120,930	1,530
Beaver Lake Landfill	Lac La Biche County	N/A	493	N/A	-
Two Hills Regional Landfill	County of Two Hills	-	-	46,015	-
Wainwright Regional Landfill	MD of Wainwright	62,405	-	29,640	-
Stettler County Operations Shop	County of Stettler	-	-	10,557	620
Horn Hill Transfer Station	Red Deer County	N/A	-	N/A	1,819
St. Michael Regional Landfill	Lamont County	-	-	33,770	1,710
Three Hills Transfer Station	Kneehill County	N/A	-	N/A	1,874
New Sarepta/Sunnybrook Waste Transfer Station	Leduc County	N/A	-	N/A	1,092
New Fish Creek Transfer Station	MD of Greenview	N/A	-	N/A	-
Bluffton Landfill	Ponoka County	N/A	-	N/A	410
Blueberry/Bonanza Transfer Site	Saddle Hills County	134,270	-	91,120	-
Rumsey/Michichi Transfer Station	Starland County	-	-	35,945	175
Central Transfer Station	Clearwater County	N/A	-	N/A	9,472
Ashmont/Mallaig Transfer Station	County of St. Paul	N/A	-	N/A	820
Rosieridge Landfill	Sturgeon County	N/A	-	N/A	-
Big Lakes County Regional Landfill	Big Lakes County	-	-	-	585
Brazeau County Shop	Brazeau County	N/A	-	N/A	880
Willow Creek Regional Landfill	MD of Willow Creek	-	-	23,950	3,480
Flatbush/Smith Transfer Station	MD of Lesser Slave River	N/A	-	N/A	-
Wanham/Tangent Transfer Stations	Birch Hills County	18,270	-	52,710	-
Mayerthorpe Transfer Station	Lac Ste. Anne County	-	-	-	3,880
Pincher Creek Landfill	MD of Pincher Creek	-	-	-	8,230
Athabasca Regional Landfill (often reported with Westlock)	Athabasca County	-	-	-	210
Grain Bag Recycler	AB Recyclers	N/A	N/A	N/A	2,590
Farm (non-pilot site)	AB Farms	-	-	300,230	1,100
Hay Processing Plants (non-pilot sites)	Southern Alberta	N/A	-	N/A	293,572
Totals		544,174	37,943	2,954,364	482,188
Total Grain Bags		3,498,538		Total Twine	520,131
		Total Grain Bags and Twine		4,018,669	
Disposal Waste Contained in 2019 Legacy Grain Bag Material					
PolyAg Recycling Ltd.		(109,760)	-	-	-
Total Grain Bags Subtract Legacy Waste		3,388,778		Total Twine	520,131
		Total Grain Bags and Twine Subtract Legacy Waste		3,908,909	

Note: County of Barrhead and Westlock County were previously reported as one collection location.

5. Quarterly Financial Report

The income statement for 2019-Q2 through 2024-Q3 follows:

Alberta Ag-Plastic. <i>Recycle It!</i> Pilot Program - Cleanfarms Financial Report											
April 2024 - March 2025						Years 1-5 & Program Total					
Revenue	Apr - Jun	July - Sep	Oct - Dec	Jan - Mar	Total	Apr '19 - Mar '20	Apr '20 - Mar '21	Apr '21 - Mar '22	Apr '22 - Mar '23	Apr '23 - Mar '24	Program Total
<i>Funds Transferred to Cleanfarms from Alberta Beef Producers</i>											
Studies	-	-	-	-	-	45,590	-	-	-	55,200	100,790
Communications	4,191	3,060	-	-	7,251	23,496	10,200	8,191	67,499	35,358	151,995
Net Collection Costs	22,757	34,272	-	-	57,029	38,838	71,469	44,070	42,363	88,360	342,129
Program Admin (Cleanfarms)	17,500	17,500	-	-	35,000	65,000	50,000	50,000	69,289	70,466	339,755
Total Revenue from Alberta Beef Producers	\$ 44,448	\$ 54,832	\$ -	\$ -	\$ 99,280	\$172,924	\$131,670	\$102,261	\$179,151	\$249,384	\$ 934,669
<i>Recycling Revenue</i>											
Revenue from Marketing Materials	24,138	15,577	-	-	39,715	6,260	68,427	105,181	108,038	75,698	403,318
Total Program Revenue	\$ 68,586	\$ 70,409	\$ -	\$ -	\$138,995	\$179,184	\$200,097	\$207,442	\$287,188	\$325,082	\$ 1,337,988
Expenses											
<i>Studies</i>											
Ag Waste Characterization Study	-	-	-	-	-	10,000	-	-	-	-	10,000
Stakeholder Groups Survey	-	-	-	-	-	28,090	-	-	-	55,200	83,290
Market Analysis	-	-	-	-	-	7,500	-	-	-	-	7,500
<i>Communications</i>											
Brand Development / Communication Plan	311	3,060	-	-	3,371	10,000	55	7,936	59,209	22,987	103,558
Printing / Delivery Costs	3,880	-	-	-	3,880	3,496	10,145	255	7,915	12,371	38,062
Design Costs	-	-	-	-	-	10,000	-	-	375	-	10,375
<i>Collection Costs</i>											
Contractor Expenses	31,114	28,420	-	-	59,534	24,120	74,048	111,416	118,178	127,941	515,238
Collection Bags	45	12,230	-	-	12,275	17,884	23,776	278	11,453	1,160	66,826
Incentive Payments	15,736	9,199	-	-	24,935	3,093	42,072	37,556	20,770	34,956	163,383
Total Collection Costs	46,895	49,849	-	-	96,744	45,098	139,897	149,251	150,401	164,058	745,448
Program Admin (Cleanfarms)	17,500	17,500	-	-	35,000	65,000	50,000	50,000	69,289	70,466	339,755
Total Cleanfarms and Operational Expenses	\$ 68,586	\$ 70,409	\$ -	\$ -	\$138,995	\$179,184	\$200,097	\$207,442	\$287,188	\$325,082	\$ 1,337,988
<i>Committee</i>											
Secretariat - APRA ¹	-	-	-	-	-	17,638	4,722	11,177	5,324	10,426	49,287
Technical Oversight - RCA ¹	-	-	-	-	-	3,054	687	2,327	-	-	6,068
ABP Accounting/Grant administrator ¹	-	-	-	-	-	900	1,200	1,200	1,200	-	4,500
Total Committee and Administrator Expenses	\$ -	\$ -	\$ -	\$ -	\$ -	\$ 21,592	\$ 6,609	\$ 14,704	\$ 6,524	\$ 10,426	\$ 59,855
Total Program Expenses	\$ 68,586	\$ 70,409	\$ -	\$ -	\$138,995	\$200,775	\$206,706	\$222,146	\$293,712	\$335,509	\$ 1,258,848

Notes: 1. As reported to Cleanfarms.

The following is a list of outstanding line items from 2024-Q3 which are not included in the above income statement; all pending invoices are within budget:

- Incentive payments (approximately \$1,750 – waiting to receive and processing invoices).
- Contractor expenses (estimated \$6,770 – processing invoices).
- Revenue (estimated \$4,360 – waiting to receive payment).

6. Other Activities and Key Dates

Events & Collection Site Communications

- In-person events:
 - August 13 – site tour of Vulcan County collection sites
- Remote Events/Webinars
 - July 3 – Lac La Biche ASB program education presentation.
 - September 11-13 – AB CARE Fall Conference Bonnyville, tradeshow booth.
 - September 12 – Red Deer ASB program education presentation.

Appendix A – Signage



Grain Bag Site Sign



Twine Site Sign

cleanfarms Grain Bags and Twine Prepare it Properly ALBERTA AG-PLASTIC RECYCLE IT!

<p>✓ Yes!</p> <p>Machine Rolled & Secured with Twine</p>  <p>Clean & Bagged Twine</p> 	<p>✗ No Thanks!</p> <p>Hand-Rolled Bags</p>  <p>Loose Drop-Offs</p>  <p>Net Wrap</p> 	<p>Silage Tarps or Other</p>  <p>Nylon Rope/Sisal Twine</p>  <p>Hay or Other Material</p> 
---	---	---

Alberta The pilot project is led by the multi-stakeholder Agricultural Plastics Recycling Group; funds were granted by the Government of Alberta and are administered by Alberta Beef Producers.

cleanfarms.ca | 403-942-6012

Combined Grain Bag and Twine Site Sign

Appendix B – Communication Assets

Grain Bag Recycling

3 steps to ensure your used grain bags can be accepted and recycled:

Grain bags that are returned loosely rolled require more space, are time consuming and difficult to manage with equipment, and they weigh very little, which is inefficient for transportation to a recycling facility.

1 Remove Debris

Grain bags need to be free of as much foreign material (spoilage, dirt, rocks, etc.) as possible.

Using a proper grain bag roller will help achieve that objective.



2 Roll

Grain bags must be rolled tightly with a standalone mechanical grain bag roller* or old haybaler, and then secured tightly with twine.



3 Return

Bring grain bags that are rolled and tied securely to your local pilot collection site.

For your nearest collection site, visit AlbertaAgPlastics.ca



*Most grain bag extractors roll the bags too loosely. Collection sites cannot accept unrolled, extractor rolled, or hand-rolled grain bags. Any improperly rolled bags may be rejected, subject to a landfill tipping fee or to additional charges at drop off.



Cleanfarms.ca
403.942.6012 | 877.622.4460
info@cleanfarms.ca | [f](https://www.facebook.com/cleanfarms) [i](https://www.instagram.com/cleanfarms) [@cleanfarms](https://www.twitter.com/cleanfarms)



Alberta The pilot project is led by the multi-stakeholder Agricultural Plastics Recycling Group, funds were granted by the Government of Alberta and are administered by Alberta Beef Producers.

Twine Recycling

3 steps to ensure your used twine can be accepted and recycled:

Pick up, free, twine collection bags from collection sites and select County/MD offices.

1 Shake

Remove as much debris, snow, or ice as possible.

Run the twine through a gloved hand to help remove debris.



2 Bag

Place loose twine* in a collection bag & secure tightly closed with twine or a zip tie.



3 Return

Bring full bags of twine to your local collection site.

For your nearest collection site, visit AlbertaAgPlastics.ca



*Plastic twine only. Bags of twine mixed with netting, sisal twine, or other materials may be rejected, subject to a landfill tipping fee or to additional charges at dropoff.



Cleanfarms.ca
403.942.6012 | 877.622.4460
info@cleanfarms.ca | [f](https://www.facebook.com/cleanfarms) [i](https://www.instagram.com/cleanfarms) [@cleanfarms](https://www.twitter.com/cleanfarms)



Alberta The pilot project is led by the multi-stakeholder Agricultural Plastics Recycling Group, funds were granted by the Government of Alberta and are administered by Alberta Beef Producers.

Updated Grain Bag Preparation Brochure

Updated Twine Preparation Brochure



Recycle Used Baler Twine

Preparing twine for recycling

Pick up, free, twine collection bags from pilot collection sites and select County/MD offices.

1. Shake to remove debris, snow or ice.
2. Place loose twine in a collection bag.
Plastic twine only. Bags of twine mixed with netting, sisal twine, or other materials will be rejected.
3. Return to an **Alberta Ag Plastic. Recycle It!** pilot collection site. Call ahead for unloading assistance.

Find recycling details and a collection site near you:

- For more about **Alberta Ag Plastic. Recycle It!** – go to **AlbertaAgPlastics.ca** or scan the QR code.
- To see what other ag materials Cleanfarms recycles, go to **Cleanfarms.ca**



Cleanfarms.ca
info@cleanfarms.ca @cleanfarms



The pilot project is led by the multi-stakeholder Agricultural Plastics Recycling Group; funds were granted by the Government of Alberta and are administered by Alberta Beef Producers.

Twine Retailer/Municipal Poster



Got used plastic baler twine?
Recycle it! | AlbertaAgPlastics.ca
 for details and collection sites



Twine 1920x1080 Retailer/Municipal TV Placement



Got used plastic baler twine?
Recycle it! | AlbertaAgPlastics.ca
 for details and collection sites



Twine Retailer/Municipal 728x90 Web Banner

**Got used plastic
 baler twine?**
Recycle it!



AlbertaAgPlastics.ca
 for details and collection sites



Twine 800x800 Retailer/Municipal Web Capsule

Appendix C – Communication Activities

Need a better way to manage used baler twine? Recycle it!



Cleanfarms operates the **Alberta Ag-Plastic. Recycle It!** pilot program to help Alberta farmers improve sustainability by recycling baler twine and grain bags.

For more about **Alberta Ag-Plastic. Recycle It!** – go to AlbertaAgPlastics.ca



Cleanfarms.ca
info@cleanfarms.ca [f](https://www.facebook.com/cleanfarms) [i](https://www.instagram.com/cleanfarms) [X](https://www.twitter.com/cleanfarms) [y](https://www.youtube.com/cleanfarms)

Recycle Baler Twine

BAG – get a free recycling bag from a participating collection site and fill with used plastic baler twine.

RETURN* – close top of bag and bring back to the collection site.

*Netting/net wrap is not accepted for recycling for technical reasons. If added, the whole bag will be unrecyclable.

cleanfarms

**ALBERTA AG-PLASTIC
RECYCLE IT!**

Alberta

The pilot project is led by the multi-stakeholder Agricultural Plastics Recycling Group; funds were granted by the Government of Alberta and are administered by Alberta Beef Producers.

Updated advertisement for print and digital media



Need a better way to manage used grain bags and baler twine?

Recycle them!

Recycle Grain Bags

ROLL – roll tightly with a mechanical grain bag roller or old hay baler, secure with twine. Contact local collection site or municipality to ask if a roller is available.

RETURN – contact [collection site](#) prior to dropping off material for rolling/drop off information.

Cleanfarms operates the **Alberta Ag-Plastic. Recycle It!** pilot program to help Alberta farmers improve sustainability by recycling baler twine and grain bags. For more about **Alberta Ag-Plastic. Recycle It!** – go to [AlbertaAgPlastics.ca](#)

Recycle Baler Twine

BAG – get a free recycling bag from a participating collection site and fill with used plastic baler twine.

RETURN* – close top of bag and bring back to the collection site.

*Netting/net wrap is not accepted for recycling for technical reasons. If added, the whole bag will be unrecyclable.



The pilot project is led by the multi-stakeholder Agricultural Plastics Recycling Group, funds were granted by the Government of Alberta and are administered by Alberta Beef Producers.

[Cleanfarms.ca](#)

info@cleanfarms.ca

[@cleanfarms](#)

📍 Find a collection location near you at csmap.cleanfarms.ca/FindMap



Updated advertisement for print and digital media